

Justice Trade Ltd

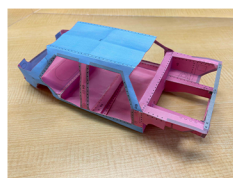
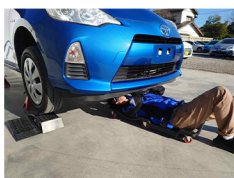
Japanese used car wholesaler

Please purchase from our stock cars!

Why us?

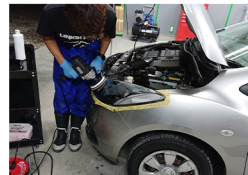
① All our vehicles are inspected by us and repaired before uploading the vehicle onto our stock list.

- We check the underside of the chassis, firewalls, and structure rust.
- Before ATL inspection, we inspect whether it meets the criteria of NZTA even if the auction grade is 4 points or more.
- We check the operation of devices Electric Windows, Air Conditioners, Electric Mirrors, and repair any malfunctions.



② We brush up our cars purchased from Auction before uploading them to our stock list.

- We repair scratches and dents on the painted surface at our partner body repair factory.
- We brush up any car body that has lost its luster.
- We polish the headlights to improve transparency.
- We clean up the dirt inside the car.



③ Optional service of adding accessories such as reverse cameras.

- We add a Reverse Camera and Monitor for it.



④ We have qualified inspectors and are understand the NZTA inspection standards.

<JAFIA Certified Instructor>

CEO Mitsuhiro Nakakubo



<AIS 3rd grade>

Inspector Ryosuke Nakakubo



2784-1 Kugedo, Kawagoe-city, Saitama-pref, Japan

+81-49-265-5490

mnakakubo@justicetrade.co.jp



OUR STOCKS
QR Below

